

# Convenient Access to Care

The Care You Need, When and Where You Want It

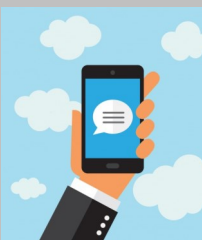
## DOCTOR VISIT

- Sharp Community Medical Group (SCMG) - 350 locations
- Arch Health Medical Group - 8 locations
- Graybill Medical Group - 12 locations
- SharpCare Medical Group - 6 locations and growing



## VIRTUAL CARE

- Video visits with primary care doctors and specialists from the comfort of your own home
- Virtual Urgent Care offered by Marque Medical Mon-Fri 7:30 a.m. to 8 p.m. and Sat-Sun 8 a.m. to 8 p.m.



## WALK-IN CLINIC

- MinuteClinic® locations inside many CVS Pharmacy® stores in San Diego County and Temecula
- Same copay as PCP office visit for SCMG HMO members
- Nurse Practitioners on site to treat minor illnesses and injuries

WALK-IN  
CLINICS



## URGENT CARE

- Over 20 Contracted Urgent Cares with doctors on staff
- Marque Medical Urgent Care (4 locations) offers on-line appointment scheduling for reduced wait times, on-site labs and digital x-rays



## EMERGENCY ROOM

- 4 Sharp HealthCare Hospitals
- 2 Palomar Health Hospitals
- 1 Rady Children's Hospital



With more than 350 practice locations, we have the broadest coverage in San Diego and North County. For a complete list of physicians and services, visit [scmg.org](http://scmg.org).

If you live in:	Your in-network hospital:
East County	Sharp Grossmont Hospital
South Bay	Sharp Chula Vista Medical Center Sharp Coronado Hospital
Central San Diego	Sharp Memorial Hospital
North County	Palomar Medical Center (Escondido) Palomar Medical Center (Poway)
For specialty care:	Your in-network hospital:
Mental Health Services	Sharp Mesa Vista Hospital
Substance Abuse Care	Sharp McDonald Center
Maternity Hospital	Sharp Mary Birch Women’s Hospital Sharp Grossmont Hospital Sharp Chula Vista Medical Center Palomar Medical Center (Escondido)
Pediatrics	Rady Children’s Hospital

For questions, call us at **858-499-2550** or toll free at **877-518-7264** from 7:30 a.m. to 5:00 p.m. Monday through Friday.